



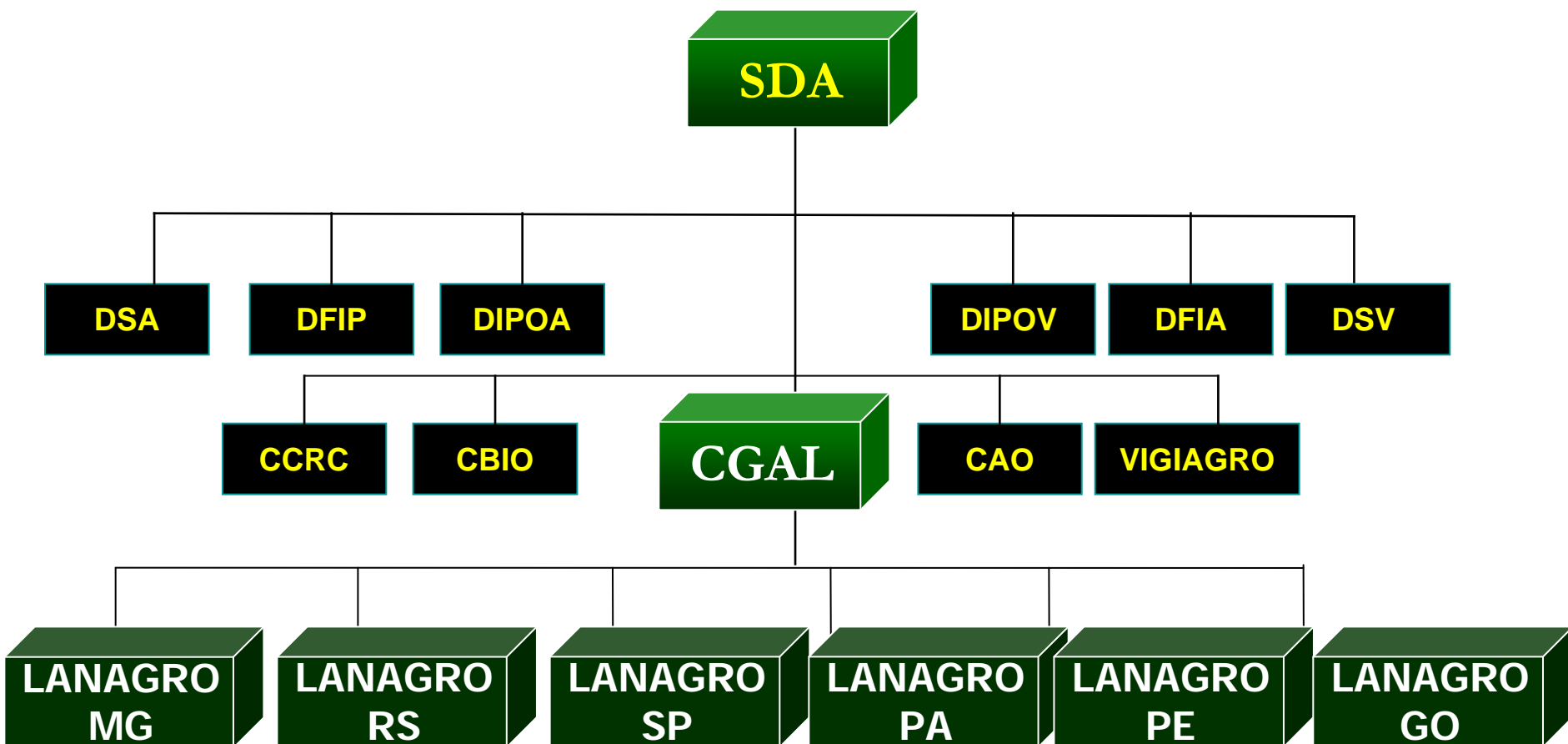
# General Coordination for Laboratory Support CGAL/SDA/MAPA

National Laboratory Network

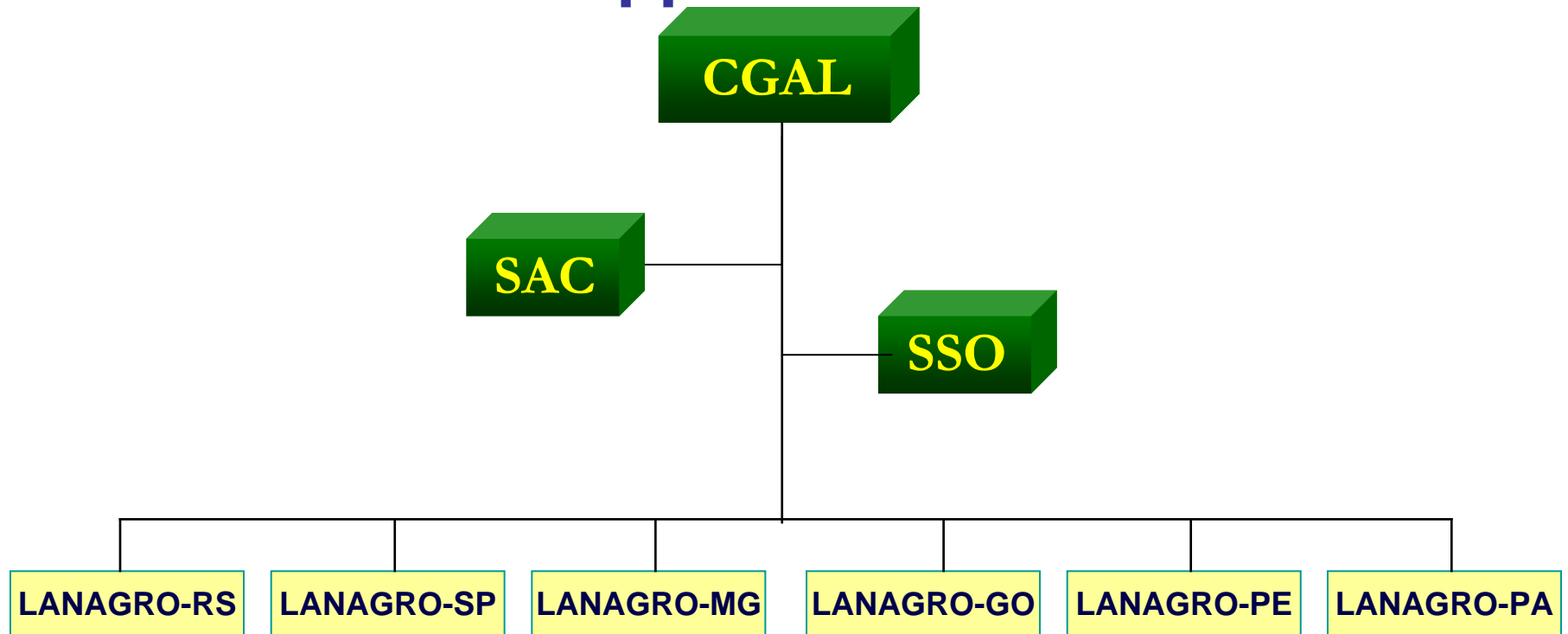


Ministério da  
Agricultura, Pecuária  
e Abastecimento



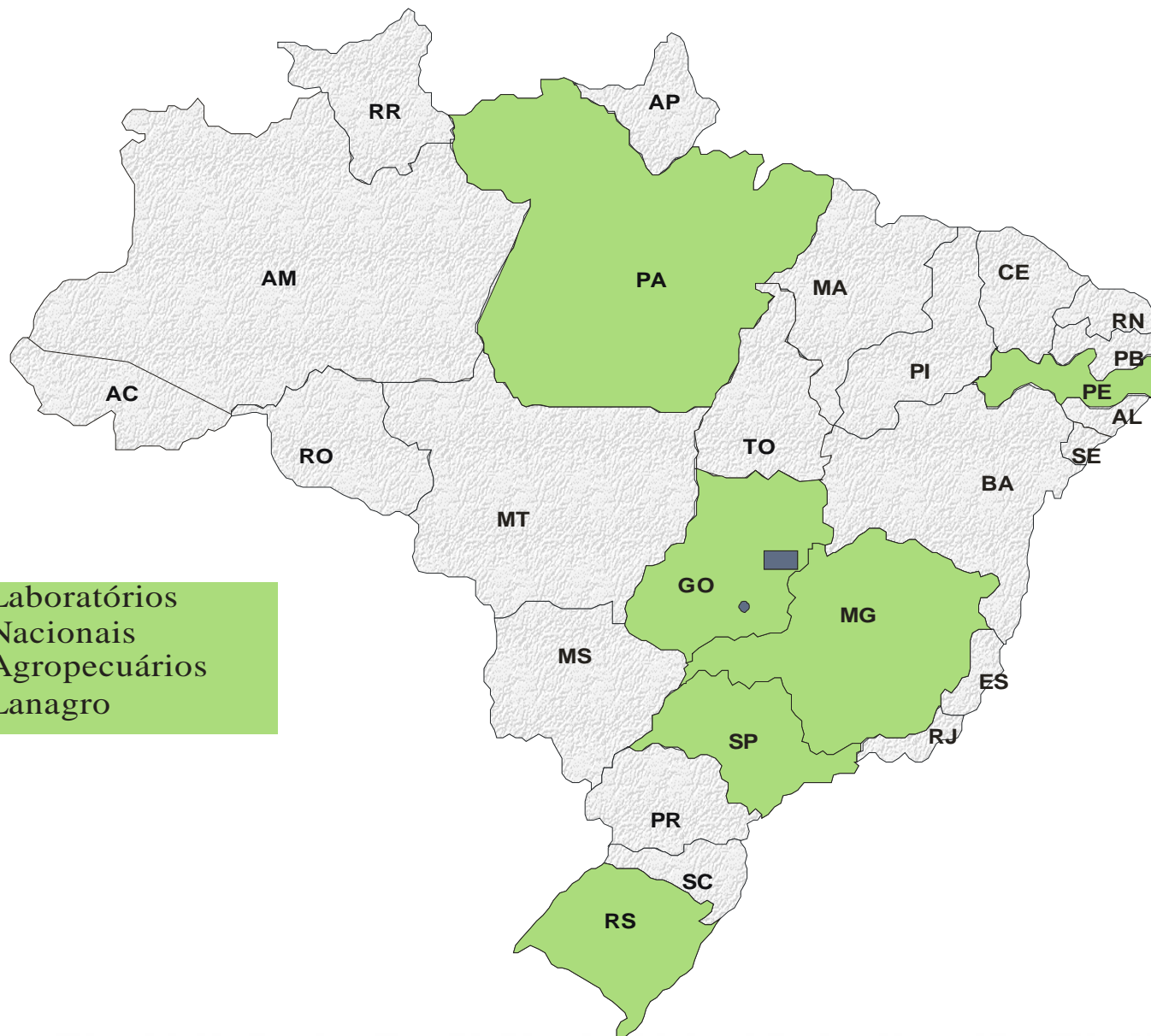


# General Coordination for Laboratory Support



# National Laboratory Network

1. Pesticides and correlates
2. Animals diagnoses
3. Vegetal Diagnoses
4. Physical chemistry Classification of product of vegetal origin
5. Physical chemistry of products of animal origin and water
6. Physical chemistry of feed
7. Physical chemistry of beverages and vinegar
8. Physical chemistry of Fertilizers, Limes, Substrates and correlates.
9. Control of Veterinary products
10. Animal Genetic identification
11. Microorganisms and correlates
12. Microbiology of food and water
- 13. Genetic Modified Organisms**
14. Milk Quality
15. Food Residues and Contaminants
16. Seeds



Laboratórios  
Nacionais  
Agropecuários  
Lanagro



# LANAGROs



Lanagro/PA



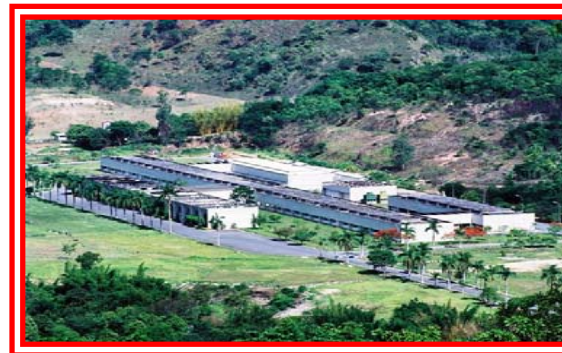
Lanagro/SP



Lanagro/RS



Lanagro/GO



Lanagro/MG



Lanagro/PE

# **Decree No 5741, 2006**

**Organize the Single System of Attention to  
Animal and Plant Health**



**SUASA**

# Decree No 5741, 2006

Art. 42 § 2º

LANAGROs

+

Authorized  
Laboratories



**National Laboratory Network (SUASA)**



# **NORMATIVE INSTRUCTION No 01, 2007**

**Sets guidelines for the recognition  
and licensing of laboratories**

# **Laboratory authorization requirements:**

- Normative Instruction No 01/2007**
- Other national laws**
- Quality System based on ABNT NBR ISO/IEC 17.025**

# Methods of Analyses

**Laboratories shall adopt official standardized or validated methods approved by MAPA**

**Any other method proposed by the laboratory shall be documented, validated and submitted for approval by MAPA**

**While the official methods of analysis are not indicated, those that are scientifically validated in accordance with internationally recognized rules or protocols may be used**

# Laboratory evaluations

- Art. 8º, IN 01/2007 → *in loco* assessments
- Art. 9º, § 9º da IN 01/2007 → Proficiency Tests

# GMO Analysis

- **Accreditation in ABNT NBR ISO/IEC 17.025 will be mandatory for GMO Laboratories**
- **MAPA is formulating a specific normative instruction for the organization of the GMO laboratory network**



# GMO Analysis

## Establishment of 3 official LANAGRO laboratories

- 2009 → Official results have been launched
- 2010 → Consolidation of the Official GMO Lab Network.

# Challenges

- 1) Access to some Certified Reference Materials;
- 2) Harmonization of methods and analytical procedures;
- 3) ISO/IEC 17025 Accreditation;
- 4) Organize proficiency testing rounds for the official GMO laboratory network;

# Thank You

Rodrigo Barbosa Nazareno

Federal Inspector

CGAL/SDA/MAPA

[rodrigo.nazareno@agricultura.gov.br](mailto:rodrigo.nazareno@agricultura.gov.br)